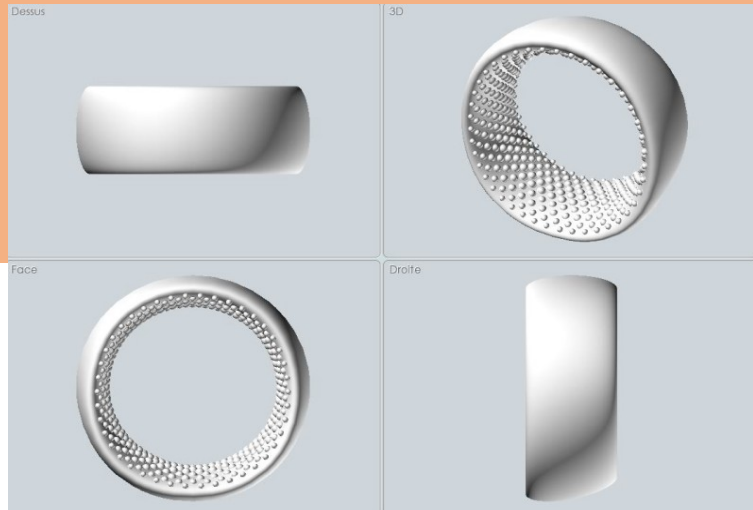
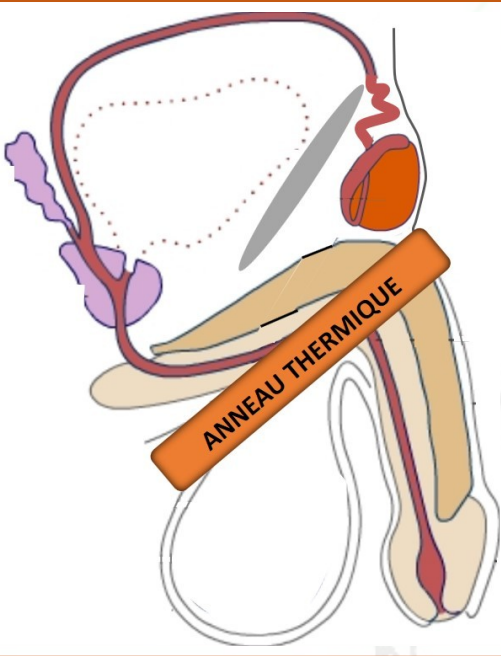


# Product sheet ANDRO-SWITCH



**Thermal ring: penoscrotal annular device designed to maintain the testes in an upward position in order to apply the male thermal contraception (MTC) protocol.**

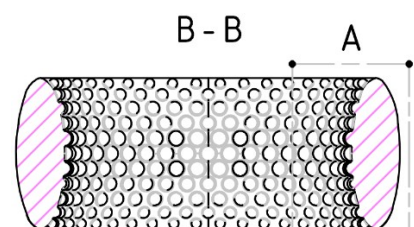
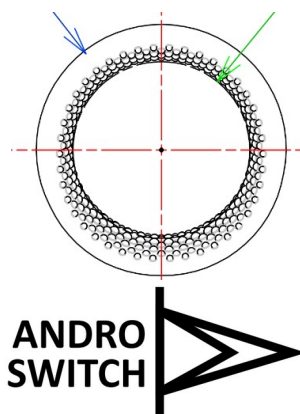
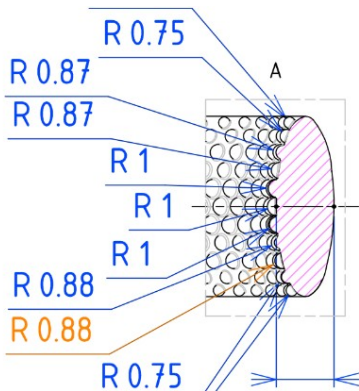
Concept	Specifically designed to maintain – temporarily – the testes above the scrotum. The rise in the testes' temperature to match that of the body leads to <b>temporary and reversible infertility</b> .
Characteristics	<p><b>Long-term, non-hormonal</b> and topical male contraception.            Contraceptive threshold: sperm count &lt; <b>1 million/ml</b>.  <b>Efficient, reversible, cost-effective</b>.</p> <p><b>Push-up effect</b> to help maintain the testes upward.  <b>Non-slip effect and breathable</b> internal side.            Ergonomic, comfortable, no constriction risks for the penis.            Non-sterile, reusable, <b>individual use only</b>.            5 available sizes.</p>
Material	<p>100% platinum-catalysed silicone, <b>certified biocompatible (ISO 10993-10 Skin Safe)</b>, flexible and clinically tested for extended skin contact.</p> <p><b>Hypoallergenic</b>, latex-free, does not contain any colouring, BPA, phtalates, plastic, bleaching agents or toxins.</p>
Indications	Any person wishing to practice MTC, <b>with their general practitioner's approval</b> . Can be used for wellness purposes.
Side effects	<p>MTC is not an instant process. Becoming infertile and recovering normal fertility levels will take a few months' time.</p> <p>No side effects have been observed while wearing the thermal ring.</p> <p>May cause itching (due to the extended contact between the device and the skin).</p> <p>If you feel any pain or discomfort, stop using the ring and inform your general practitioner or pharmacist.</p>
Use	<b>Insert the penis</b> inside the thermal ring. <b>Gently slide the scrotum skin</b> into the device until it is completely inserted. Lacking space, <b>the testes</b> will then <b>naturally move back up in the inguinal sac</b> , at the root of the penis.

	<p>Make sure that the testes are in the inguinal sac with a light palpation          Can be covered with standard underwear.          Can be placed and removed in any position.          You do not need to use a lubricant for placement and removal or while wearing the ring.          You can urinate, have sexual intercourse, get erections and go about your daily and professional business just like you normally would.</p>	
<p><b>Hygiene &amp; Storage</b></p>	<p>Clean the product before and after each use with lukewarm water and <b>gentle soap</b>.          Only use water-based lubricants.</p>	
<p><b>Wearing period</b></p>	<p><b>15 hours a day</b> / maximum 4 years in a row using this contraception method</p>	
<p><b>Contraindications</b></p>	<p>Any anomalies of the groin, the pubis, the penis, and the testes; inguinal hernia; testicular cancer; strength decline in the hands; obesity; local skin infections around the penis, scrotum, groin and pubis area; contact dermatitis in the penis, scrotum, groin and pubis area; penile edema.</p>	
<ul style="list-style-type: none"> <li>• Practising MTC and wearing the annular ring will not provide any protection against sexually transmitted diseases (STD) or infections (STI), against which the condom is the only effective barrier.</li> <li>• Before using this product, please refer to your general practitioner.</li> <li>• Make sure you always wear the device strictly following the instructions from the MTC protocol and those given to you by your GP. If you have any doubts, ask your GP or your pharmacist.</li> </ul>		

<https://thoreme.org>

FB: [slow.contraception](https://www.facebook.com/slow.contraception)

[contact@thoreme.org](mailto:contact@thoreme.org)



**ANDRO SWITCH**